

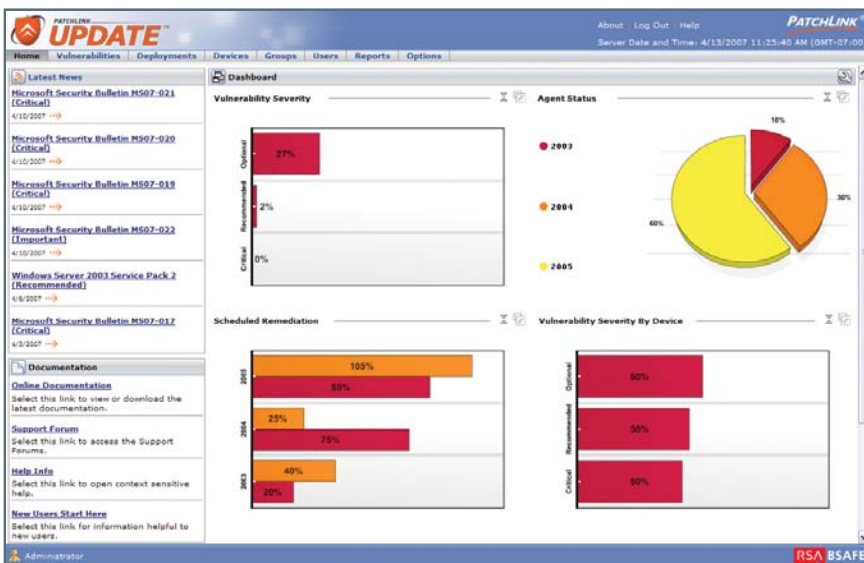


With major software vendors now reporting more than 8,000 vulnerabilities each year<sup>1</sup>, eradicating all of the potential threats to your network is a daunting task. PatchLink Update delivers a cost-effective way to quickly, accurately and securely deliver and monitor software patches throughout your network.

## Market Leading Solution :

PatchLink Update, ranked the #1 patch management solution by IDC for the past 3 years, is a comprehensive patch and vulnerability management solution that enables you to:

- ☐ Reduce corporate risk through the timely, proactive elimination of operating system and application vulnerabilities.
- ☐ Demonstrate compliance with security policies and government regulations through continuous patch monitoring and comprehensive reporting.
- ☐ Decrease IT costs and improve productivity with a highly automated, subscription-based patch management solution.



PatchLink Update - Dashboard View

## Advanced Patch Management :

PatchLink Update™ provides rapid, accurate and secure patch management, allowing you to proactively manage threats by automating the collection, analysis and delivery of patches throughout your enterprise. PatchLink Update significantly decreases the costs involved in securing your organization from worms, trojans, viruses and other malicious threats.

### Features & Benefits

- ☐ **Patented Technology :** Patch Fingerprint Technology™ ensures the highest level of accuracy in the detection of security vulnerabilities
- ☐ **World's Largest Patch Repository :** Access to more than 15,000 pre-tested operating system (Windows, Mac, UNIX, Linux, Novell) and application patches
- ☐ **Agent-Based Architecture :** Protect mobile devices that are often disconnected from the network and reduce network bandwidth usage
- ☐ **Inventory Management :** Establish a comprehensive and detailed inventory including software, hardware and services on all network devices
- ☐ **Flexible Scanning and Deployments :** Control the scanning and distribution schedule to minimize business disruptions
- ☐ **Advanced Grouping with Directory Integration :** Dynamic creation of groups based on existing Active Directory environments, with cascading inheritance for agent policy, mandatory baseline and user permissions
- ☐ **Role-Based Administration :** Delegate remediation and reporting activities to improve productivity while maintaining security
- ☐ **Subscription Service :** Receive up-to-date content via secure, encrypted transmissions
- ☐ **Policy-Based Administration :** Establish and automatically enforce minimum security policy across your network
- ☐ **Comprehensive Reporting :** Document changes and demonstrate progress toward audit and compliance requirements

**Thorough, Agent-Based Vulnerability Assessments**

Quickly and accurately compile a comprehensive, centralized view of all of the vulnerabilities on your network through intensive agent-based scans of each managed endpoint.

**Intelligent, Secure Patch Deployments**

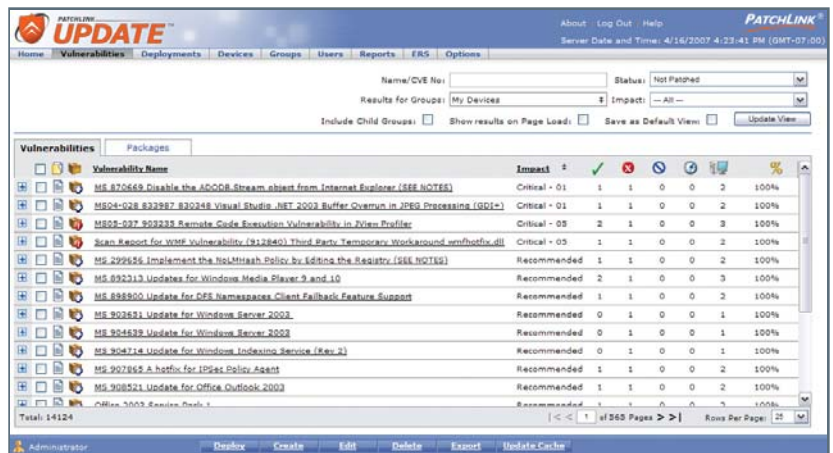
Rapidly deploy any of the 15,000+ patches in the world's largest repository of security content using an intelligent patch deployment wizard, with advanced capabilities designed to reduce administrative effort and limit end-user disruptions.

**Continuous Validation of Policy Compliance**

Continuously monitor and report the vulnerability and patch status of each managed endpoint, with automatic e-mail alerts for failed deployments.

**Comprehensive Reporting**

Address operational, management and compliance reporting needs with over 20 standard reports that document vulnerabilities, patch deployments, patch status, inventory and more – at individual machine or aggregated levels.



PatchLink Update - Vulnerabilities View

**How It Works**

**Patch Acquisition**

PatchLink proactively downloads patches from major software vendors daily into our secure repository.

**PatchLink Pre-Testing**

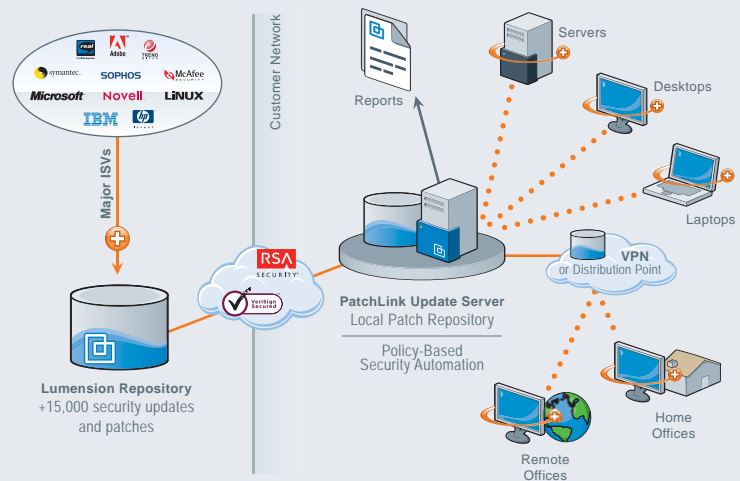
Next, PatchLink develops and tests all Patch Packages on their applicable operating systems and languages.

**Secure Patch Delivery**

Patches are then delivered securely to your local PatchLink Update server via a 128-bit encrypted VERISIGN trusted connection along with RSA BSAFE® encryption.

**Vulnerability Assessment & Remediation**

PatchLink Update detects vulnerabilities across your network and enables Administrators to schedule automated deployments based upon your security policies.



**Start Your Free 30-Day Evaluation**

To learn more about how PatchLink Update can dramatically improve the security of your organization, please visit us on the web at [www.lumension.com](http://www.lumension.com).

Sources:

1. Carnegie Mellon University's Computer Emergency Response Team (CERT) reported 8,064 published vulnerabilities between 1995 and 2006



**Lumension Security**  
 15880 N Greenway-Hayden, Suite 100  
 Scottsdale, AZ 85260  
 480.970.1025 \ [www.lumension.com](http://www.lumension.com)



**PatchLink® - A Lumension Brand.**

©2007 Lumension Security. All rights reserved. Lumension Security, the Lumension Security logo, and the PatchLink and Sanctuary product names and logos are either registered trademarks or trademarks of Lumension Security. In addition, other companies' names and products mentioned in this document, if any, may be either registered trademarks or trademarks of their respective owners.